

A dramatic scene of space debris remediation. A large, cylindrical satellite component is being disintegrated by a bright, intense laser beam or energy pulse. The debris is flying outwards in all directions, creating a chaotic and explosive appearance. The Earth is visible in the background, partially obscured by the debris and the bright light of the remediation process.

**SPACE DEBRIS REMEDIATION - SDR**

**TERMINATORR PROJECT 2024**



Ltd UK and LLC IRVINE

# WHY FEDERATE THE ACTORS IN SPACE DEBRIS REMEDIATION ?

The solution is not in one-shot action, all national institutions as well as

NASA-JPL-LOCKHEED MARTIN-DoD-NSA-DOC-DoE-EPA-UNOOSA-LEOLABS -ESA-CNES-AIRBUS-ARIANESPACE- ISRO-JAXA-SSA-ROSCOSMOS-ASA-ALR-DLR-ISA-UKSA-CSA others...

These entities are perfectly aware of the possible Kessler syndrome event might coming at any time.

In addition MEGA constellations are increasing geometrically the risk and the dangerous objects at LEO

The Challenge is as following:

## **We have to neutralize 800-1000 dangerous objects PER YEAR**

Dangerous objects are:

Defunct satellites-uncontrolled-satellites-failed De-orbiting and refuel actions -size

50 cm-to several meters

The more dangerous space debris are **1 cm and inferior** they are similar as a cloud

ONLY THE PLASMA MACHINE TERMINATORR( PERT PATENT) can eliminate this cloud at LEO.

[www.space-debris-remediation.com](http://www.space-debris-remediation.com)

The solution of the FEDERATION of several corporates or Agencies is the unique solution in order to DETECT and CAPTURE( THE ACTORS) the dangerous objects per day and avoid the Kessler syndrome .

**TERMINATORR will terminate the space debris detected and captured, including the cloud of very small size objects.**

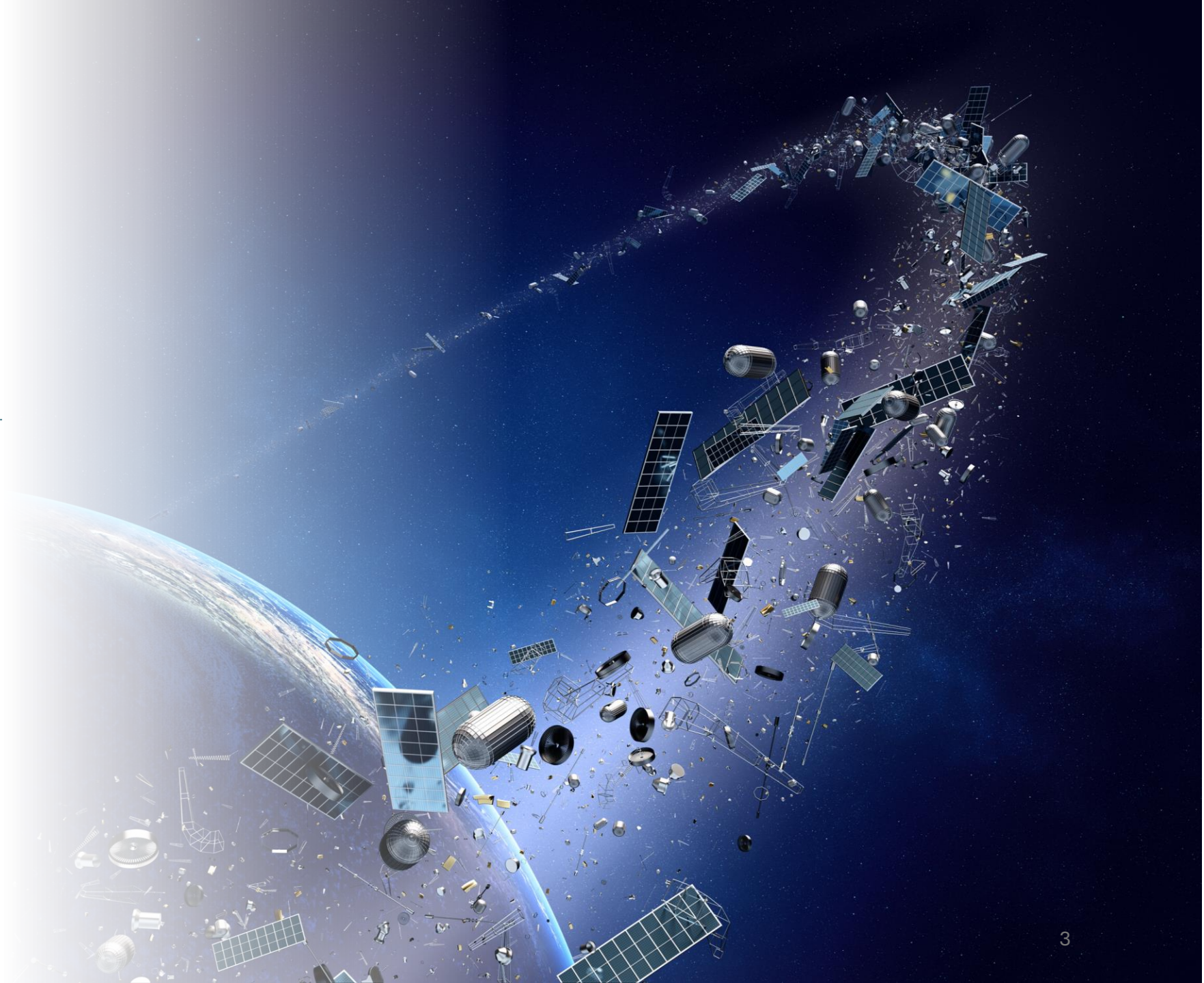


## Author of the note

Prof. Dr. Christian Daniel Assoun  
physicist - CEO President of  
Glycan Space Industries LLC  
[glycanspacexr-heliotorr@glycangroup.com](mailto:glycanspacexr-heliotorr@glycangroup.com)  
+ 41 79 213 77 18 (Switzerland)

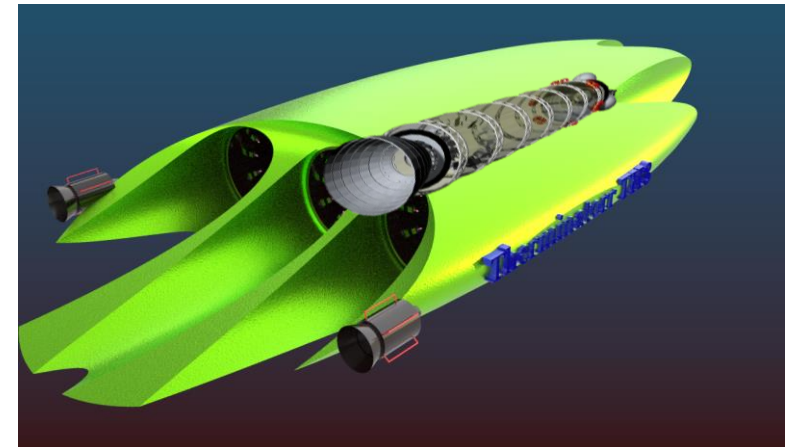
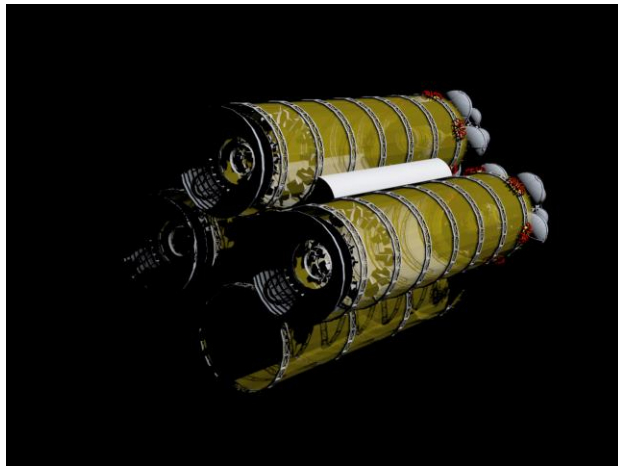
## Space program

Michael D'Arcangelo  
COO - SPACE PROGRAM  
[MichaelGlycanSpace-XR@glycangroup.com](mailto:MichaelGlycanSpace-XR@glycangroup.com)  
1 313 461 84 55



# TERMINATORR TH3 SHUTTLE PROTOTYPES

Summary Engineering







The final configuration of TERMINATOR TH3 is similar as a SHUTTLE able to realize several missions at LEO LOW EARTH ORBITAL 700-800 km or at GTO Geostationary transfer Orbital **altitude** of

35 786 km, there are several GTO configuration

[https://www.researchgate.net/publication/324210214\\_Comparative\\_Analysis\\_of\\_Sub\\_GTO\\_GTO\\_and\\_Super\\_GTO\\_in\\_Orbit\\_Raising\\_for\\_All\\_Electric\\_Satellites#fullTextFileContent](https://www.researchgate.net/publication/324210214_Comparative_Analysis_of_Sub_GTO_GTO_and_Super_GTO_in_Orbit_Raising_for_All_Electric_Satellites#fullTextFileContent)

700km-800 km are among 550 km- 2000 km preferred altitudes.

Military orbitals are not disclosed.

In fact the major risk of collision might occurs with ISS and uncontrol cloud of satellites.

All these scenarios( are well known by (NASA-FAA-National SECURITY COUNCIL, ODRAD -OSPT-AAAS-DoD-PENTAGON-DARPA ) <http://www.whitehouse.gov/ostp> and the Entropy of the syndrome is growing month after month, and the maximum syndrome will occurs associated with failures in the constellations launched by the space industry.

### **GEOMETRY OF TERMINATOR TH3**

TERMINATOR is formed by THREE cylinders 3 meters section 9 m length

The final shape is SHUTTLE like.

Major components are:

- PLASMA Machine ( three cylinders) (Vacuum line)
- Plasma torches-RF- Laser line-Star mounting-
- Robotics( repair modules)
- AI ( Artificial Intelligence)
- Space Fence
- Spectrometry tools – ICP-MS-GC-MS-NMR-RAMAN-XRF
- Generators
- Plasma sphere propulsion(dense)
- Magnetic compression
- CRYO-TANKS
- ACCRETION CHAMBERS
- Communication modules (ground-ISS-others space debris hunters)
- LUNAR ORBITAL
- DECONTAMINATION OF MOON (industrial activities)

Special glasses and PMGroup

STOWAGE ANCHORS

80 cm coupling entry with ISS and others hunters as well as LUNAR ORBITER

Some parts of the Engineering are not disclosed, included solar operator and antigravity tensors.

Mainly the elaboration of metallic fuels(plasma dense propulsion).

SEED FUNDS 20% of the program 20 MU\$

#### **FOR THE FACILITIES**

- TEAMS7
- Materials
- Physics
- Chemistry

**COST OF THE COMPLETE TERMINATORR PROGRAM - 400 MU\$**

- REVENUES ( multi\$BN) Gov contracts-grants-taxes FAA applied to launchers companies and final clients
- NET ROI to be determined ( JV with the Investor) SPAC financial tool.

TERMINATORR applied to EARTH- MOON

The BP numbers must be discussed and revised for special situation applied to CONSTELLATION.

# MAKE YOUR PLANET CLEAN AGAIN

TERMINATORR plasma machines  
At different altitudes

<https://www.satellitetoday.com/content-collection/ses-hub-geo-meo-and-leo/>

[GEO, MEO, and LEO - Via Satellite \(satellitetoday.com\)](https://www.satellitetoday.com/content-collection/ses-hub-geo-meo-and-leo/)

The TERMINATORR project is a planet benefit



The TERMINATORR project is the only plasma patented technology who can solve the main problem of CONTAMINATION around EARTH and SECURITY CONCERN for the international industrial communication who can appear at ANY MOMENT.(the security concern)  
The part of the unique solution is to **FEDERATE corporates(false competitors(in fact allies) to TERMINATORR able to detect and capture the dangerous objects** , and TERMINATORR will terminate the job and definitively remediate the menace

Of the well known KESSLER SYNDROME ,TERMINATORR will become the new friend and protector of our planet.

Therefore the TEN corporates really actives in the space debris mitigation or remediation at international level NASA-Lockheed Martin-LEOLABS -ESA , others... become the space remediation force in our SOLAR SYSTEM, helping astronomers and astrophysicists and LAUNCHERS of satellites.

The by- products issued from plasma treatment will be used in the future as FUELS for SHIP PROPULSION in order to go to MOON (Moons) or MARS and the full SO(SOLAR SYSTEM) and beyond.

The potential raw material transformed in FUEL is around 10'000 tons.

JOIN US DO NOT WASTE YOUR FUNDS AND PRECIOUS TIME!

The battle against this permanent menace NEEDS YOU.